

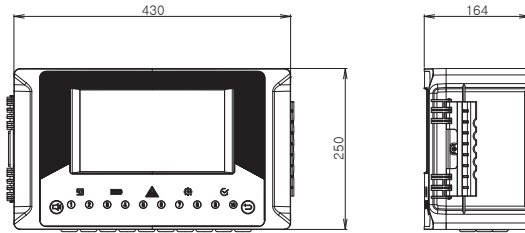
ASC-100 Safety Controller

| Up to 10 channels of gas detector monitoring (4 ~ 20mA detection and 24V supply) | Expansion of additional 10 channels when using extension unit (monitoring up to 20 channels) | Relay, 4 ~ 20mA output function Individual module configuration | 10.1" touch screen with wide viewing angle and multi-language support | Intuitive user interface and alarm system configuration | Detector position and alarm status can be displayed using map monitoring mode | Detection channel log function and various event storage function | Material safety data sheet (MSDS) viewer for sensing gas | High output buzzer and user voice alarm function according to alarm occurrence | Various external interfaces such as TCP / IP and MODBUS | Provides earthquake alarm detection function (intensity 3 ~ 7) | Robust case construction and IP65 waterproof / dustproof |

IMAGE



DIMENSION (Unit : mm)

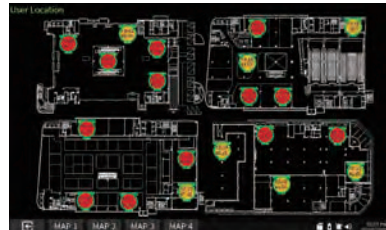


ACCESSORIES

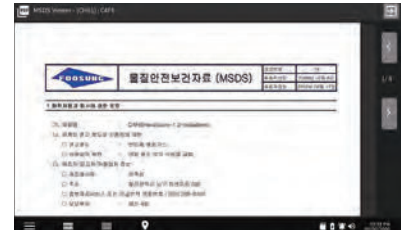


Expansion Unit

MONITOR IMAGE



Map Viewer Function



MSDS Viewer Function

SPECIFICATION

※ Specifications are subject to be changed without prior notice.

| Model | ASC(AEGIS Safety Controller)-100 | Wall Mount Type |
|-------------------|--|-----------------|
| Capacity | Up to 10Channels with Base Unit, up to 20Channels with Expansion Unit | |
| Size | 430mm x 240mm x 150mm | (WxHxD) |
| Weight | Max 8.5Kg | |
| Housing Material | ABS PC | |
| Display | 10.1" Touch Screen (Resistive Type) | |
| Language | Korean, English, Chinese. | |
| Visual Indicators | 5 System LED(Power, Battery, Alarm, Service, Status) 3 Led for each channel. (Green:Normal/ Yellow:Fault/Red:Alarm) | |
| Audible Alarm | 90dB(@1m) Piezo Buzzer (Alarm), 2W Speaker (Voice Guidance/Alarm) | |
| Button | Operating Reset / Alarm Mute | |
| 4-20mA Input | 4-20mA DC (2-wire or 3-wire) Up to 10Channel with Base Unit, up to 20Channel with Expansion Unit | |
| Relay Output | AC250V 5A, , DC30V 5A relay contact (SPDT) Up to 20Channel with Base Unit, up to 40Channel with Expansion Unit | |

| Model | ASC(AEGIS Safety Controller)-100 | Wall Mount Type |
|-----------------------|---|-----------------|
| 4-20mA Output | 4-20mA DC (2-wire) Up to 10Channel with Base Unit, up to 20Channel with Expansion Unit | |
| Operating temperature | -10℃ ~ +55℃ | |
| Operating humidity | 5 ~ 95% RH | |
| IP Grade | IP65 | |
| AC Power | AC 110/220 V 50 - 60 Hz ± 6% / Max 150W | |
| DC Power | DC 18 - 32 V(Normal DC 24V) / Max 150W | |
| Backup Battery | 21.8V/5100mAh Lithium Ion Battery (>30minutes for typical System) | Optional |
| External Interface | TCP/IP, MODBUS | |
| Logging | Logged Event & Data | |
| Setup Tools | WinApp Program | |
| Others | Earthquake Sensor | Optional |

CERTIFICATION

CE

Refer to website