

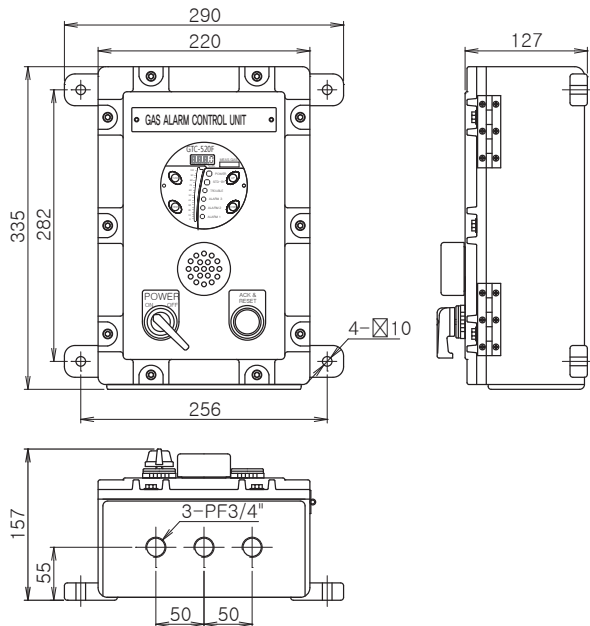
GTC-520F Series Single Channel Explosion Proof Type Gas Detector Receiver

| Usable in explosion hazardous area with flame proof structure | Easy installation with a wall mount type | Gas concentration display with 4-digit & Bar-graph (32 segment, 3-color LED) | 3-color display according to alarm stages (Green, Yellow, Red) | 3-stage alarm, 1-trouble LED display and relay contact output | Easy configuration of monitoring system with RS-485 Modbus isolated serial data communication(Optional) | Programmable alarm setting (Level, Time delay) | Peak hold | Self diagnosis |

IMAGE



DIMENSION (Unit : mm)



ACCESSORIES



RS-485 module

SPECIFICATION

※ Specifications are subject to be changed without prior notice.

EXPLOSION PROOF TYPE TYPE GAS DETECTOR RECEIVER GTC-520F SERIES	
Model	GTC-520F
Operation display	6-LED (Power, 3-stage alarm, Trouble, Stand-by)
Measuring display	4-Digit FND & Bar-graph
Measuring range	1-9999(programmable) / %LEL, ppm, %Vol
Alarm display	Visual 3-stage alarm, Trouble LED Audible : buzzer
Alarm output signal	3-Stage Alarm, Trouble / AC250V 5A relay contact (SPDT) Shut-off valve control signal (DC 12V)
Alarm level set	Programmable within detection range
Input signal	4-20mA DC (2-wire or 3-wire)
Output signal	4-20mA DC RS-485 Communication Modbus(option)
Reset signal	Reset switch and remote control
Program set mode	Alarm value (1, 2, 3 alarm) Alarm time (instant & delay) 1~30min Alarm dead band Relay output on/off
Operating temperature	-20°C ~ +50°C
Operating humidity	5~99%RH(non-condensing)
Dimensions	290(W) x 347(H) x 137(D)mm
Weight	12kg
CERTIFICATION	
KCs	Ex d IIB+H2 T6