

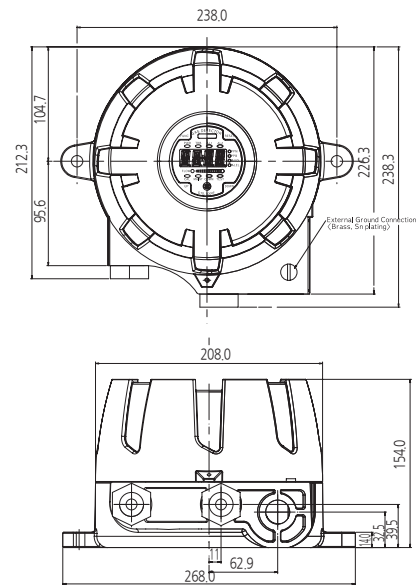
## GTD-5000F Explosion Proof Type Sampling Oxygen & Toxic Gas Detector

| Continuous detection of toxic gases and oxygen in explosion hazardous area with flame proof structure | Self diagnosis function with built-in Microprocessor | Easy replacement with a cartridge type sensor | Digital flow sensor to maintain regular flow rate | Fast response of gas leakage with a high efficient pump inside | Stable quality and proved detection principle for service life | Excellent selectivity by adapting detection principle only for toxic gases & oxygen | Superior performance for detecting gases below TLV | Auto calibration and program setting with a magnet bar | 4-digit digital gas concentration display | 4-20mA (Current source or Sink) output signal | Easy configuration of monitoring system by RS-485 Modbus communication | 3-Wire Type | 2-stage alarm, 1-trouble display and relay contact output | Calibration and maintenance by one-man |

### IMAGE



### DIMENSION (Unit : mm)



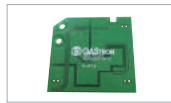
### ACCESSORIES



Cable Gland



Male Connector



RS-485 module



Mounting Bracket

### SPECIFICATION

※ Specifications are subject to be changed without prior notice.

| EXPLOSION PROOF & SAMPLING TYPE OXYGEN & TOXIC GAS DETECTOR |  |  |
|---|--|--|
| Model   | GTD-5000F  |  |
| Measuring gas   | O <sub>2</sub>   | Toxic gases(CO, Cl <sub>2</sub> , NH <sub>3</sub> & etc) |
| Measuring type  | Auto Sampling type   |  |
| Measuring method  | Galvanic cell or Electrochemical cell  | Electrochemical cell                                     |
| Measuring range   | Refer to Toxic Gas Measuring Range   |  |
| Response time   | < 15sec / 90% scale  | < 45sec / 90% scale                                      |
| Accuracy  | ±3% / Full Scale   |  |
| Parameter control   | Non intrusive control with a Magnet bar (calibration, maintenance, alarm setting)      |  |
| Operation mode display                                      | Alarm / Trouble LED , Flow rate  |  |
| Measuring value display                                     | FND Display(4-Digit)   |  |
| Alarm signal output   | 2A@30VDC, 0.5A@125VAC (resistive load) / 3-SPST relay contact(2stage alarm, 1 trouble) |  |
| Output signal   | Analog output : 4-20mA DC  | Digital output   |
| Sampling method   | Diaphragm Pump   |  |
| Sampling line   | OD 1/4 "(Standard)   |  |
| Flow rate   | 0 - 1000 ml/min max  |  |
| Conduit connection  | Standard : PF 3/4"   | Option : NPT 1/2", N , M25 x 1.5P                        |
| Mounting type   | Wall mount   |  |
| Operating temperature                                       | -40°C ~ + 60°C   |  |
| Operating humidity  | 5 to 99% RH (Non-condensing)   |  |
| Material  | ALDC   |  |
| Dimensions  | 226.3(W) × 154(H) × 238(D) mm  |  |
| Weight  | 5kg  |  |

#### CERTIFICATION

|              |                       |                     |                       |
|--------------|-----------------------|---------------------|-----------------------|
| KCs          | Ex d IIC T6           | NEPSI               | Ex d IIB+H2 T6, T5 Gb |
| ATEX / IECEx | Ex d IIB+H2 T6, T5 Gb | CE / KFI / KC / CPA | Refer to website      |